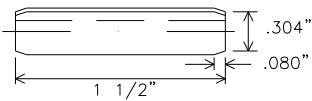
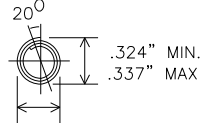


SWAGED CHAMFER  
BOTH ENDS



# TEXAS UNIVERSAL TRIANGULAR SLIPBASE SYSTEM

POST  
10 BWG TUBING OR  
SCHEDULE 80 PIPE

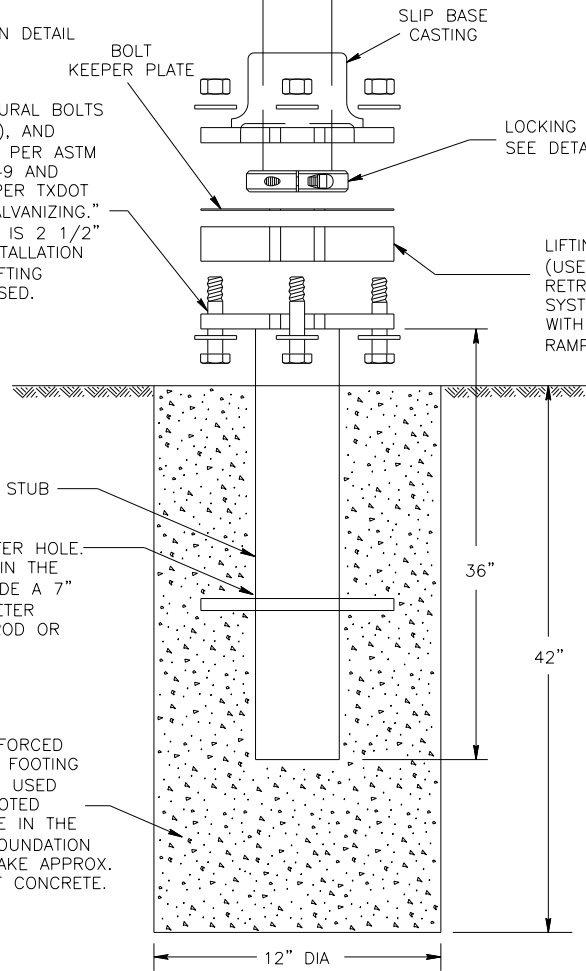


.324" MIN.  
.337" MAX.

CONCRETE ANCHOR CONSISTS OF 5/8" DIAMETER STUD BOLT WITH UNC SERIES BOLT THREADS ON THE UPPER END. HEAVY HEX NUT PER ASTM A563, AND HARDENED WASHER PER ASTM F436. THE STUD BOLT SHALL HAVE MINIMUM YIELD AND ULTIMATE TENSILE STRENGTHS OF 50 AND 75 KSI, RESPECTIVELY. NUTS, BOLTS AND WASHERS SHALL BE GALVANIZED PER ITEM 445, "GALVANIZING." TOP OF BOLT SHALL EXTEND AT LEAST FLUSH WITH TOP OF THE NUT WHEN INSTALLED. THE ANCHOR, WHEN INSTALLED IN 4000 PSI NORMAL-WEIGHT CONCRETE WITH A 5 1/2" MINIMUM EMBEDMENT, SHALL HAVE A MINIMUM ALLOWABLE TENSION AND SHEAR OF 3900 AND 3100 PSI, RESPECTIVELY. ADHESIVE TYPE ANCHORS SHALL HAVE STUD BOLTS INSTALLED WITH TYPE III EPOXY PER DMS-6100, "EPOXIES AND ADHESIVES." ADHESIVE ANCHORS MAY BE LOADED AFTER ADEQUATE EPOXY CURE TIME, PER THE MANUFACTURER'S RECOMMENDATIONS.

DOUBLE ROLL PIN DETAIL

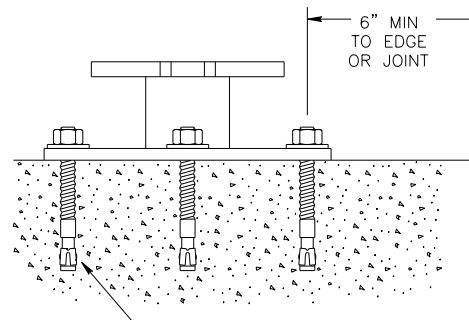
5/8" STRUCTURAL BOLTS (3), NUTS (3), AND WASHERS (6) PER ASTM A325 OR A449 AND GALVANIZED PER TXDOT ITEM 445 "GALVANIZING." BOLT LENGTH IS 2 1/2" FOR NEW INSTALLATION AND 4" IF LIFTING SPACER IS USED.



3/4" DIAMETER HOLE. IF REQUIRED IN THE PLANS, PROVIDE A 7" X 1/2" DIAMETER GALVANIZED ROD OR #4 REBAR.

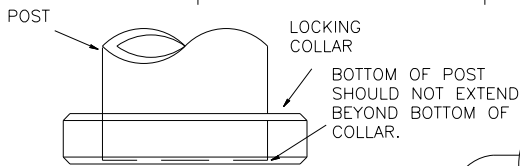
NON-REINFORCED CONCRETE FOOTING (SHALL BE USED UNLESS NOTED ELSEWHERE IN THE PLANS). FOUNDATION SHOULD TAKE APPROX. 2.5 CF OF CONCRETE.

LIFTING SPACER (USED ONLY WHEN RETROFITTING OLD SYSTEM STUB WITH LIFTING RAMP)

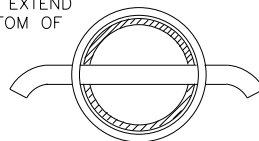


5/8" DIAMETER CONCRETE ANCHOR - 8 PLACES (EMBED A MINIMUM OF 5 1/2" AND TORQUE TO MIN. OF 50 FT-LBS). ANCHOR MAY BE EXPANSION OR ADHESIVE TYPE.

DETAIL E



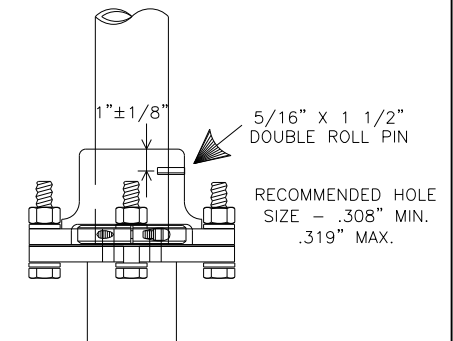
ROLL PIN (OPTIONAL)



VIEW G-G

**NOTE:**

WHEN THIN WALL TUBING IS USED, RUBBER INSERT MUST BE PLACED IN BASE POST.



IF SHOWN IN PLANS, THE ENGINEER MAY REQUIRE THE ROLL PIN TO BE INSTALLED TO REDUCE POSSIBLE SIGN ROTATION.

SCALE: NOT TO SCALE



MARBLE FALLS  
800 THIRD STREET  
MARBLE FALLS, TX 78654  
PH: (830) 693-6737

These documents were prepared by,  
or under the supervision of:

ERIC BELAJ 107148 May 31, 2017  
Engineer's Name PE# Date

Engineer's Signature

SECTION

**PAVING**

DETAIL NO.

PV-25

TITLE

SIGN MOUNT  
(2 OF 2)