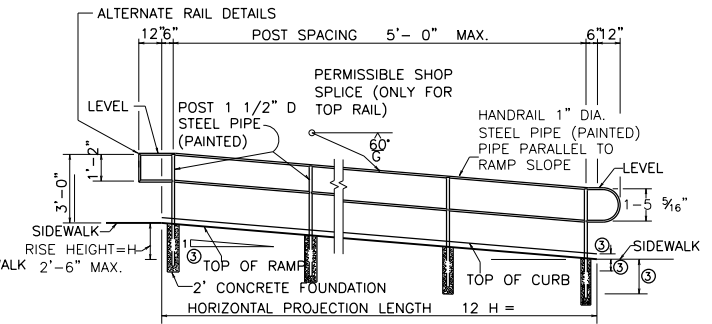


HANDRAIL ON RAMP

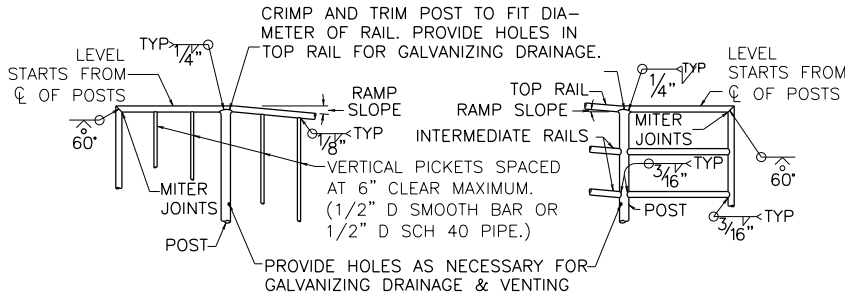
(USED WHERE RAMP OR SIDEWALK IS MORE THAN 2'-6" ABOVE ADJACENT SURFACE.)



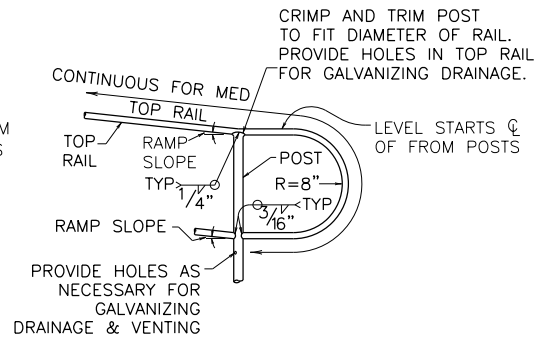
SEE RAMP DETAILS LOCATED ELSEWHERE IN PLANS FOR RAMP SLOPE AND DIMENSIONS.

HANDRAIL ON RAMP

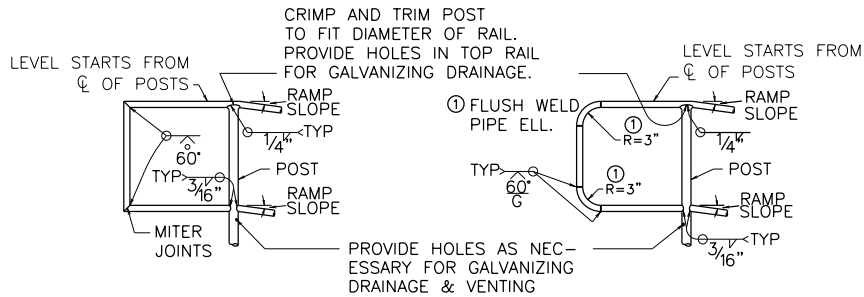
(USED IN SINGLE-LEVEL RAMP OR LOWEST PART IN MULTI-LEVEL RAMP.)



RAIL DETAILS



RAIL DETAILS



ALTERNATE RAIL DETAILS

SCALE: NOT TO SCALE



MARBLE FALLS
800 THIRD STREET
MARBLE FALLS, TX 78654
PH: (830) 693-6737

These documents were prepared by,
or under the supervision of:

ERIC BELAJ 107148 May 31, 2017
Engineer's Name PE# Date

[Signature]
Engineer's Signature

SECTION

PAVING

DETAIL NO.

PV-21

TITLE

RAMP HANDRAIL
(1 OF 2)