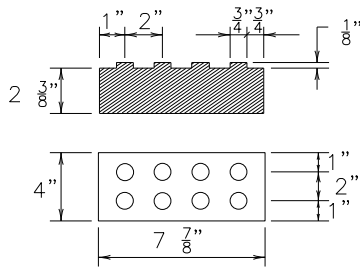
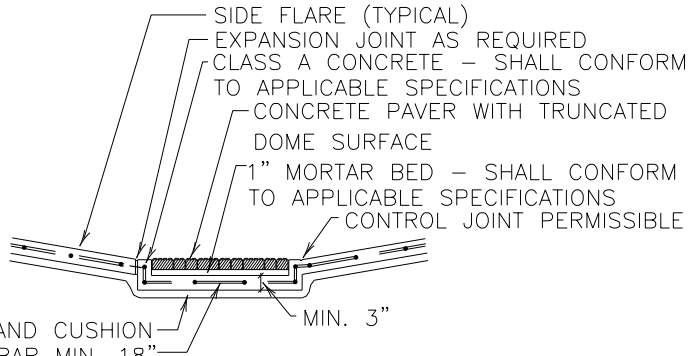


TYPE A

TRUNCATED DOME PATTERN CURB RAMP



CONCRETE PAVER WITH TRUNCATED DOME SURFACE



SECTION A-A

CONCRETE PAVER NOTES:

CONCRETE PAVER UNITS SHALL MEET ALL REQUIREMENTS OF ASTM C-936, C-33, AND SHALL BE LAID IN A TWO BY TWO UNIT BASKET WEAVE PATTERN, UNLESS SHOWN OTHERWISE IN THE PLANS.

CONCRETE PAVER UNITS SHALL HAVE A TRUNCATED DOME TOP SURFACE FOR DETECTABLE WARNING TO PEDESTRIANS.

CONCRETE PAVER UNIT COLOR FOR THE RAMP SHALL BE A CONTRASTING COLOR TO THE ADJACENT SURFACES. THE COLOR OF THE CONCRETE PAVER UNITS SHALL BE SHOWN ELSEWHERE IN THE PLANS. (ADJACENT SURFACES INCLUDE SIDE FLARES).

CONCRETE PAVER UNITS SHALL BE SAW CUT ONLY AND ANY CUT UNIT SHALL BE NOT LESS THAN 25 PERCENT OF A FULL UNIT.

CURB RAMP NOTES:

CONCRETE SURFACE AREAS THAT ARE IDENTIFIED IN THE PLANS TO RECEIVE SEALER/STAIN TREATMENT, SHALL NOT BE TREATED W/ CURING COMPOUND (RETARDANT) AND SHALL BE ALLOWED TO CURE A MINIMUM OF 30 DAYS PRIOR TO APPLICATION OF THE SEALER/STAIN.

THE SEALER/STAIN FOR THE RAMP SHALL BE A CONTRASTING COLOR TO THE ADJACENT SURFACES (ADJACENT SURFACES INCLUDE THE SIDE FLARES). THE COLOR OF THE SEALER/STAIN SHALL BE SHOWN ELSEWHERE IN THE PLANS.

SEALER/STAIN SHALL BE APPLIED IN ACCORDANCE WITH APPLICABLE SPECIFICATIONS.

AREAS RECEIVING SEALER/STAIN TREATMENT SHALL BE CLEANED USING A "DRY" (SAND) BLAST CLEANING METHOD IN ACCORDANCE WITH APPLICABLE SPECIFICATIONS.

DETECTABLE WARNINGS SHALL CONSIST OF RAISED TRUNCATED DOMES WITH A DIAMETER OF NOMINAL 0.9 IN, A HEIGHT OF NOMINAL 0.2 IN AND A CENTER-TO-CENTER SPACING OF NOMINAL 2.35 IN AND SHALL CONTRAST VISUALLY WITH ADJOINING SURFACES, EITHER LIGHT-ON-DARK, OR DARK-ON-LIGHT.

SCALE: NOT TO SCALE



MARBLE FALLS

800 THIRD STREET
MARBLE FALLS, TX 78654

PH: (830) 693-6737

These documents were prepared by,
or under the supervision of:

ERIC BELAJ 107148 May 31, 2017
Engineer's Name PE# Date

Engineer's Signature

SECTION

PAVING

DETAIL NO.

PV-20

TITLE

RAMP TRUNCATED
DOME TEXTURING