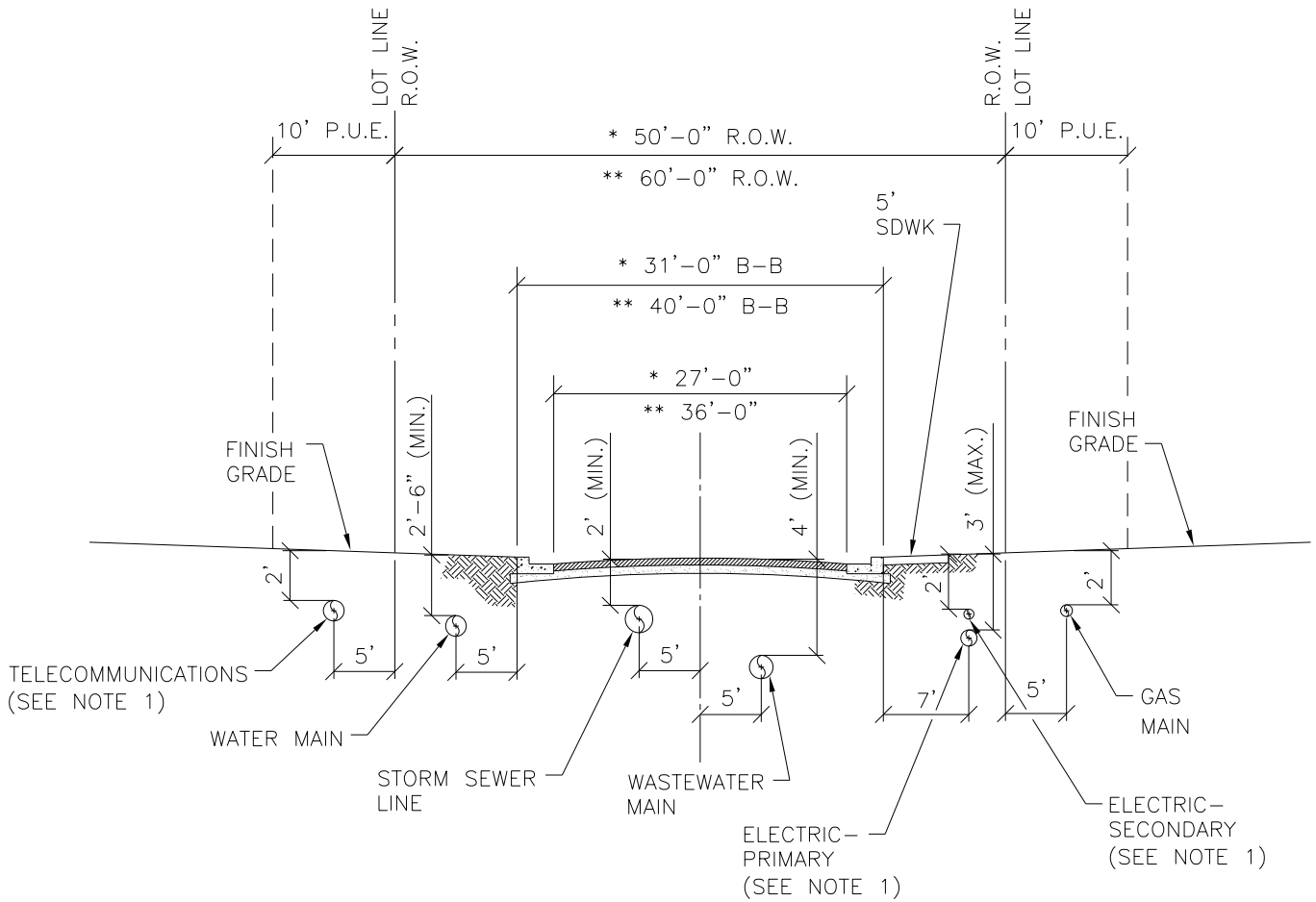


* LOCAL RESIDENTIAL STREET
 ** RESIDENTIAL COLLECTOR STREET



NOTE:

1. WHEN USING JOINT TRENCH FOR ELECTRIC AND TELECOMMUNICATIONS, GAS MAIN WILL BE LOCATED ON THE OPPOSITE SIDE OF THE STREET FROM THE JOINT TRENCH.

SCALE: NOT TO SCALE



MARBLE FALLS
 800 THIRD STREET
 MARBLE FALLS, TX 78654
 PH: (830) 693-6737

These documents were prepared by,
 or under the supervision of:

ERIC BELAJ 107148 May 31, 2017
 Engineer's Name PE# Date

[Signature]
 Engineer's Signature

SECTION

PAVING

DETAIL NO.

PV-3

TITLE

PAVING & UTILITY LAYOUT
 SECTION (2 OF 2)