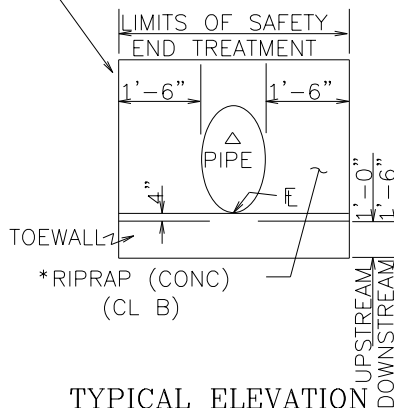
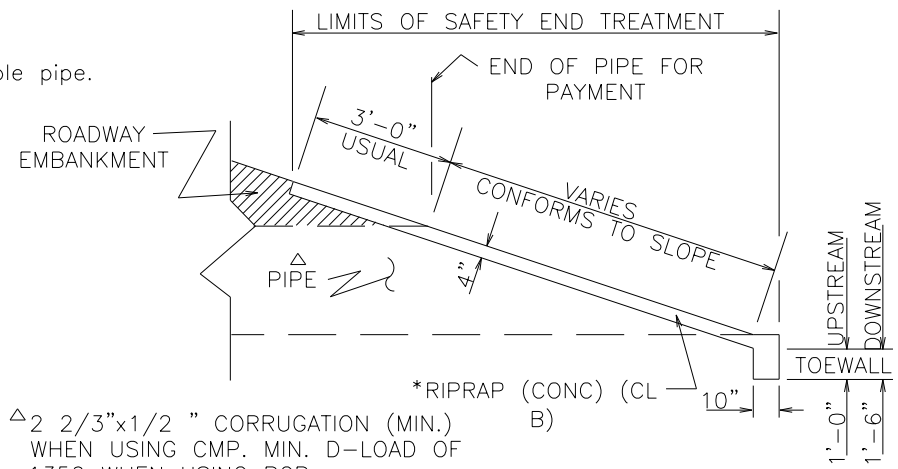


NOTE:

Use same dimensions for multiple pipe.



TYPICAL ELEVATION AT PIPE ENDS



TYPICAL SECTION AT PIPE END

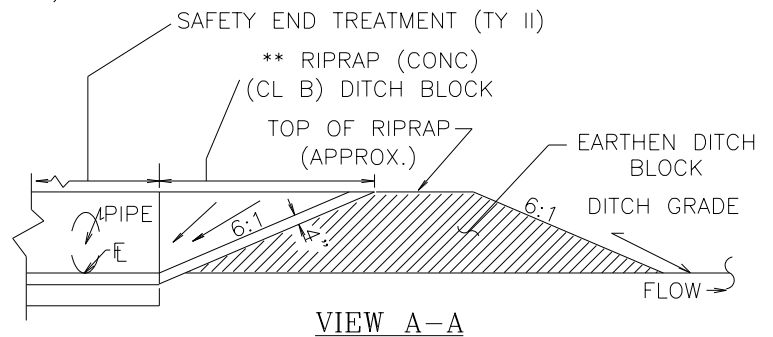
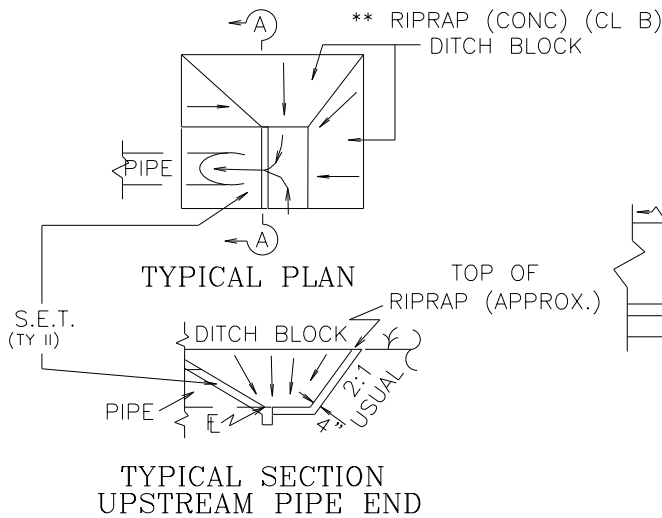
Δ 2 2/3" x 1/2" CORRUGATION (MIN.)
WHEN USING CMP. MIN. D-LOAD OF 1350 WHEN USING RCP.

CROSS DRAINAGE SAFETY END TREATMENT (TY II) DETAIL

NOTE:

- PIPE ENDS SHALL BE CUT IN THE FIELD TO MATCH THE ROADWAY SLOPE.
- *ALL RIPRAP CONCRETE SHOWN WITH THE S.E.T. WILL NOT BE PAID FOR DIRECTLY BUT SHALL BE CONSIDERED SUBSIDIARY TO THE BID ITEM "SAFETY END TREATMENT".
- **ALL RIPRAP (CONC) (CL B) PLACED OUTSIDE THE S.E.T. LIMITS (DITCH BLOCK, ETC.) WILL BE PAID FOR IN ACCORDANCE WITH THE BID ITEM "RIPRAP".

IF IN THE OPINION OF THE ENGINEER THAT A DITCH BLOCK IS NEEDED, 100 LF OF MBGF AND 2 TAS WILL BE PLACED AT THE LOCATION DETERMINED BY THE ENGINEER.



SCALE: NOT TO SCALE



MARBLE FALLS
800 THIRD STREET
MARBLE FALLS, TX 78654
PH: (830) 693-6737

These documents were prepared by,
or under the supervision of:

ERIC BELAJ 107148 May 31, 2017
Engineer's Name PE# Date

[Signature]
Engineer's Signature

SECTION
STORM DRAINAGE

DETAIL NO.
SD-13

TITLE
SLOPED END TREATMENT
TYPE 'B' (2 OF 2)